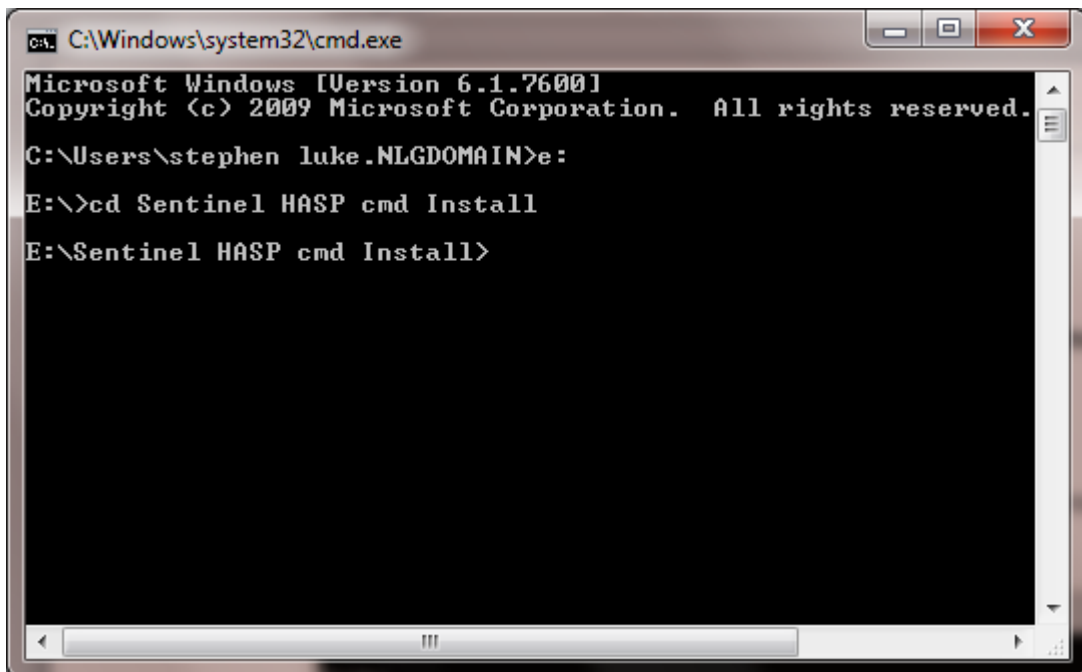


Manual Installation of Dongle Drivers

1. Disconnect the Dongle from the PC
2. The driver files can be found at:
 - a. <http://www.v-kit.com/about-v-kit/downloads/download-software/>
 - b. On the installation CD-ROM supplied with v-kit Pro
3. Save the download to a suitable location on your local PC and extract/unzip the contents.
4. Open a command prompt and change directory to the folder where the extracted driver download was saved. In the example below the folder is E:\Sentinel HASP cmd Install



```
C:\Windows\system32\cmd.exe
Microsoft Windows [Version 6.1.7600]
Copyright (c) 2009 Microsoft Corporation. All rights reserved.

C:\Users\stephen_luke.NLGDMAIN>e:
E:\>cd Sentinel HASP cmd Install
E:\Sentinel HASP cmd Install>
```

5. Type **haspdinst -i** and press enter to install the driver. If you are prompted *“Do you want to allow the following program to make changes to your computer?”* then click **Yes**.



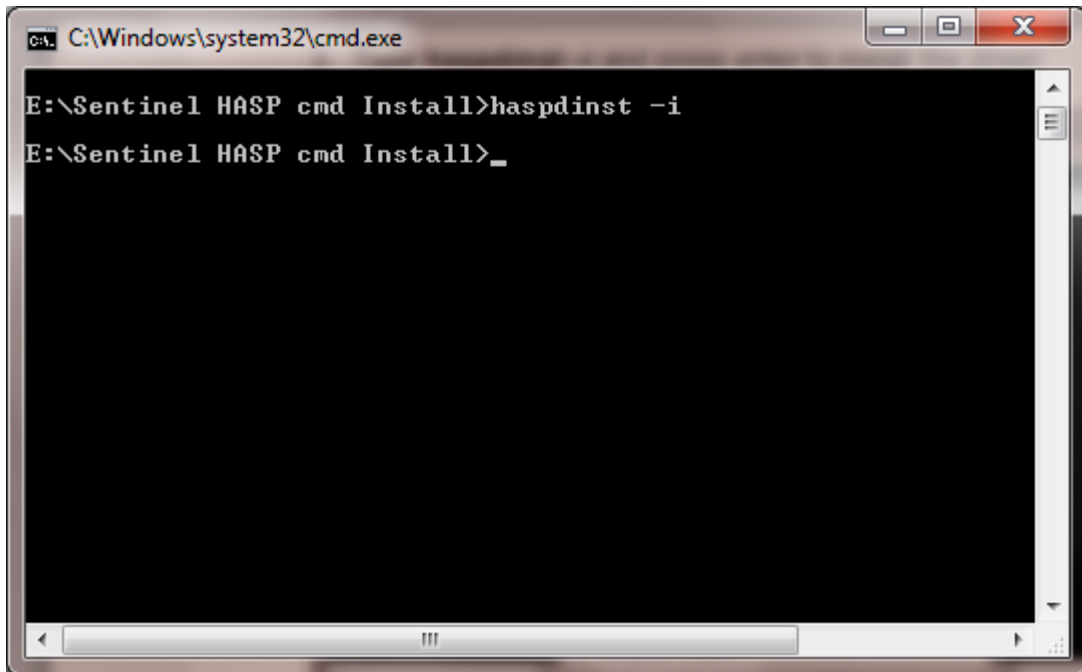
v-kit technical support

+44 (0)1260 274-266

info@v-kit.com

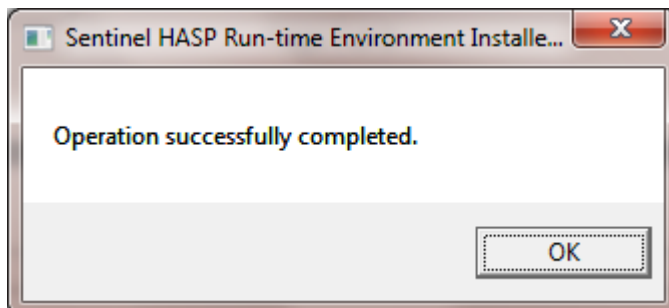
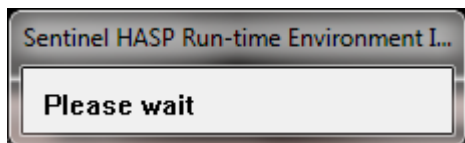
www.v-kit.com/support

Manual Installation of Dongle Drivers



```
C:\Windows\system32\cmd.exe
E:\Sentinel HASP cmd Install>haspdinst -i
E:\Sentinel HASP cmd Install>_
```

6. You will see the following messages when the installation is running and completes.



v-kit technical support

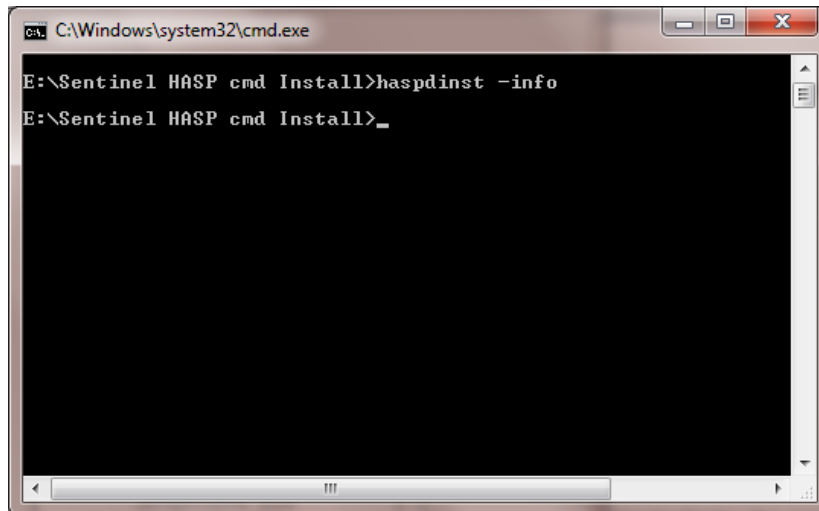
+44 (0)1260 274-266

info@v-kit.com

www.v-kit.com/support

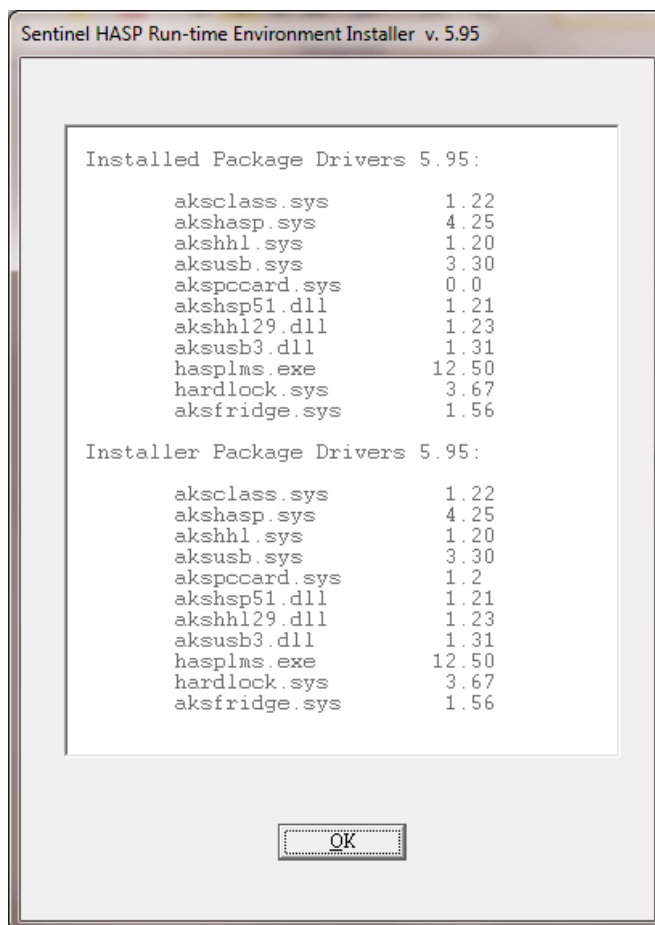
Manual Installation of Dongle Drivers

7. Type **haspdinst -info** and press enter to display the currently installed driver. If you are prompted *“Do you want to allow the following program to make changes to your computer?”* then click **Yes**.



```
C:\Windows\system32\cmd.exe
E:\Sentinel HASP cmd Install>haspdinst -info
E:\Sentinel HASP cmd Install>_
```

The details should show that the Installed Package Drivers match the Installer Package Drivers. Click **OK**.



8. Reconnect the Dongle to the PC



v-kit technical support

+44 (0)1260 274-266

info@v-kit.com

www.v-kit.com/support